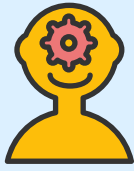


COVID-19 and the School Psychology Service

We are all going through some challenging times right now and we do not know what teaching and learning will look like in the coming weeks and months.



The School Psychology Service will continue to be available. They will just be working a little differently than usual.

New!

Instead of meeting parents, carers, and students face-to-face, they will be meeting them online, over the phone, or through email.



They can still work with students if they are having a tough time, and can also work with parents or carers if they want some help with behaviour, learning or any other worries.

If any parent, carer, or student would like to connect with a school psychologist, please make contact with your school's Administration team.



If the matter is urgent contact:

Rurallink 1800 552 002

Kidshelpline 1800 551 800 (5 to 25 year olds) or 1800 654 432 (parents)

headspace 1800 650 890

Lifeline 13 11 14

more helpline details are available at <https://www.mhc.wa.gov.au/getting-help/helplines>